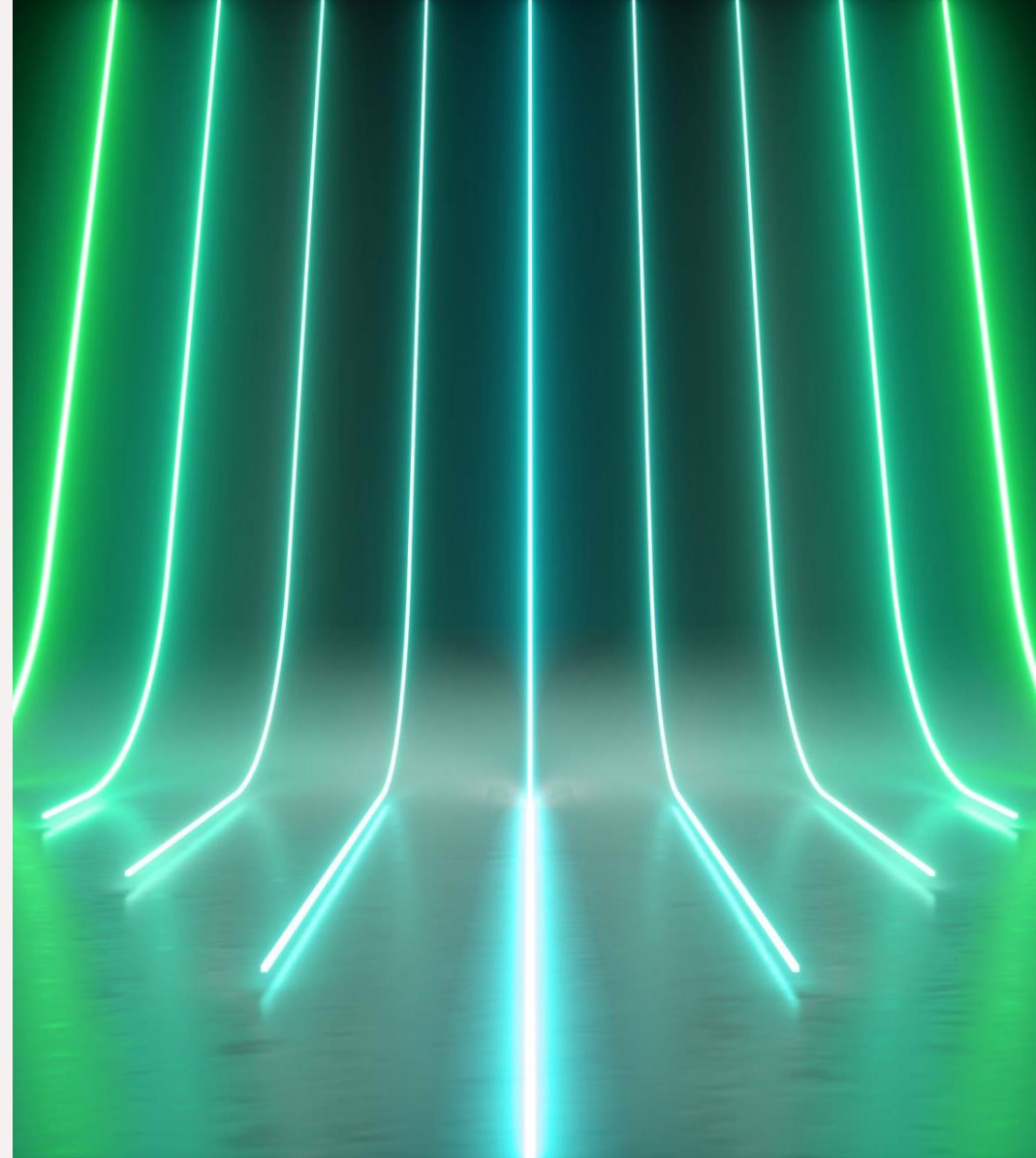


MINORU PHOTO CLUB

My Workflow and Backup Strategies

Francis G. Dorsemaine



Workflows and Backup Strategy

- Home Workflow
- Traveling Workflow
- Backup Strategy

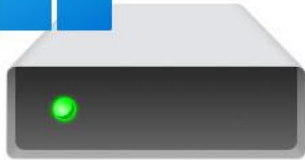
Home Workflow

This workflow is simpler than the Travel workflow we will study later.

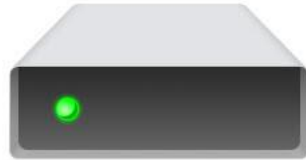
My personal organization on Windows is drive and folder based:

- Drive C: contains all the programs I use: Photoshop, Lightroom but also ON1, Luminar Neo and the Topaz plugins. It also contains the Lightroom Classic catalog. This is an SSD Drive.
- Drive D: contains only Data
 - PICTURES organized by Year and then by Date, such as: **D:\My Pictures\2023\2023-06-14 London Farm**
 - PHOTO these are resources such as Skies, Textures, Tutorials, etc...
- Drive E: also contains only Data, such as Music, Downloads, Archives
- Drive F: is an external drive to which Drives C: and D: are backed up
- Drive S: only contains Caches for programs which use any (SSD Drive)

Architecture



SSD 2TB
Windows, Programs



HDD 8TB
Data (Documents,
Pictures, Videos, ...)



HDD 4TB
Miscellaneous (Downloads,
Archives, Music)



SSD 256GB
Cache for Programs



Ext. HDD 14TB
Backup



Home Workflow

1. Insert card into card reader
2. Copy Folder(s) from card to current year
3. Rename folder from camera's default to yyyy-mm-dd <Subject>
4. Import Pictures into Lightroom
5. Scan pictures 1-2-3 Method
6. Erase all pictures rated 1
7. Post process pictures rated 3

1-2-3 Method

I use 1-2-3 as the position of the keys on the keypad is the easiest:

- Set [Caps Lock] on
- Use [1] for each picture which should be deleted
- Use [2] for pictures which may have a documentary value
- Use [3] for pictures which are keepers and/or may need some post-processing
- Set [Caps Lock] off

(in Lightroom [Caps Lock] on advances to next pictures after rating)



Travel Workflow

Hardware:

- Laptop
- SD Card Reader (*if not included to the Laptop*)
- External Drive
- Spare SD Cards

Travel Workflow

Method:

1. Insert Card from the Camera into the Laptop (or Card Reader)
2. Copy Folder(s) from the Card to the External Drive
3. Import Folder(s) into Lightroom (or to your favorite Application Catalog)
4. Scan pictures 1-2-3 Method (as previously described)
5. Erase all pictures rated 1
6. Backup from the External Drive to Spare SD Cards
7. Eventually Post process pictures rated 3

Backup Strategy

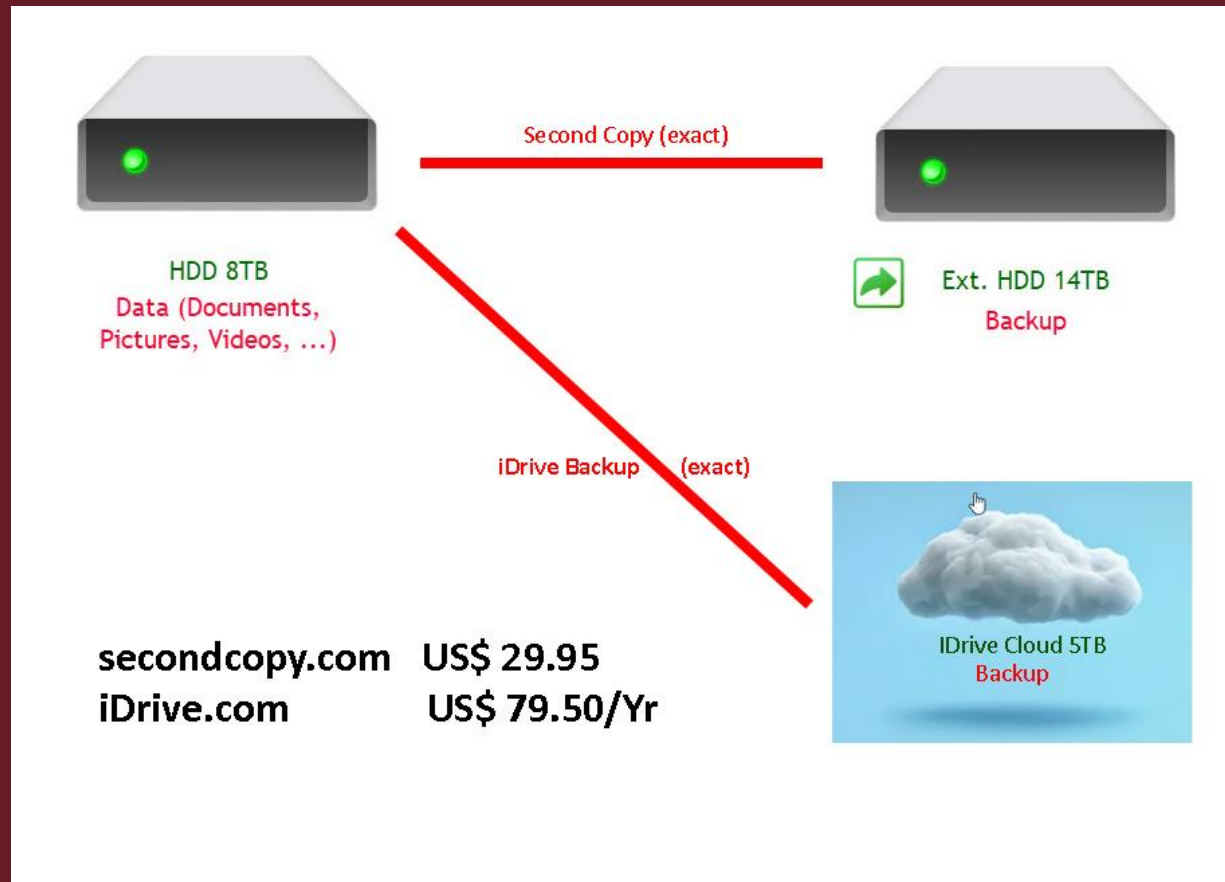
Theory:

- Keep one Backup On-Site for ease of access.
- Keep a Second Backup Off-Site for Security

Practice:

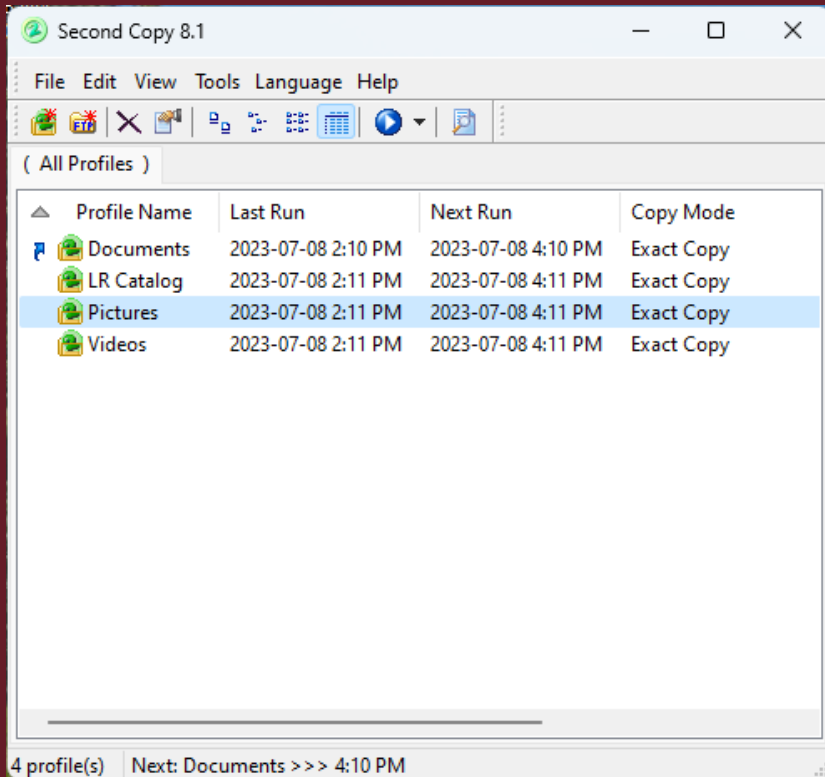
- First Backup to External Drive. I use *SecondCopy* program to constantly synchronize the originals to the External Drive.
- Second Backup is also maintained live to the Cloud through *iDrive*.

Backup Strategy



Backup Strategy

SecondCopy Setup:



Backup Strategy

iDrive Setup:

The screenshot shows the iDrive software interface. On the left is a blue sidebar with navigation options: Backup, Restore, Scheduler, Cloud Drive, Server Backup, and Settings. At the bottom of the sidebar is a 'Clone/Computer Backup' button and the text 'Next Scheduled Event 2023-07-09 2:47 AM'. The main window has a search bar, user email 'fgd@fgd-consul...com', storage usage '2505.22 GB of 5000.00 GB used', and buttons for 'Upgrade' and 'View Logs'. Below this are radio buttons for backup destinations: 'Backup files to my iDrive account' (selected) and 'Backup files to Local, Wi-Fi or Express device'. A table titled 'Files / folders for online backup' lists folders and their file counts and sizes. At the bottom, there are buttons for 'Change ...', 'Backup Now', and 'Schedule', along with the summary 'Total: 217913 files / 2441.56 GB'.

Folder Path	Files	Size
D:\development\Canyon\	1760 files	302.62 MB
D:\development\websites\	75529 files	10.91 GB
D:\Documents\	11875 files	18.64 GB
D:\My Pictures_Miscellaneous\	24644 files	95.13 GB
D:\My Pictures\1999-2001\	46 files	451.40 MB
D:\My Pictures\2002\	1272 files	987.09 MB
D:\My Pictures\2003\	523 files	481.51 MB
D:\My Pictures\2004\	329 files	270.08 MB
D:\My Pictures\2005\	721 files	4.38 GB
D:\My Pictures\2006\	711 files	2.26 GB
D:\My Pictures\2007\	1236 files	11.56 GB
D:\My Pictures\2008\	1377 files	10.95 GB
D:\My Pictures\2009\	1469 files	7.56 GB
D:\My Pictures\2010\	12637 files	122.39 GB
D:\My Pictures\2011\	7425 files	138.80 GB
D:\My Pictures\2012\	6622 files	127.90 GB
D:\My Pictures\2013\	6240 files	139.67 GB
D:\My Pictures\2014\	7509 files	182.05 GB
D:\My Pictures\2015\	13776 files	325.26 GB
D:\My Pictures\2016\	5711 files	128.16 GB
D:\My Pictures\2017\	4552 files	109.92 GB

Workflows and Backup Strategy

- Q & A

Workflows and Backup Strategy

- Thank You for Your Attention